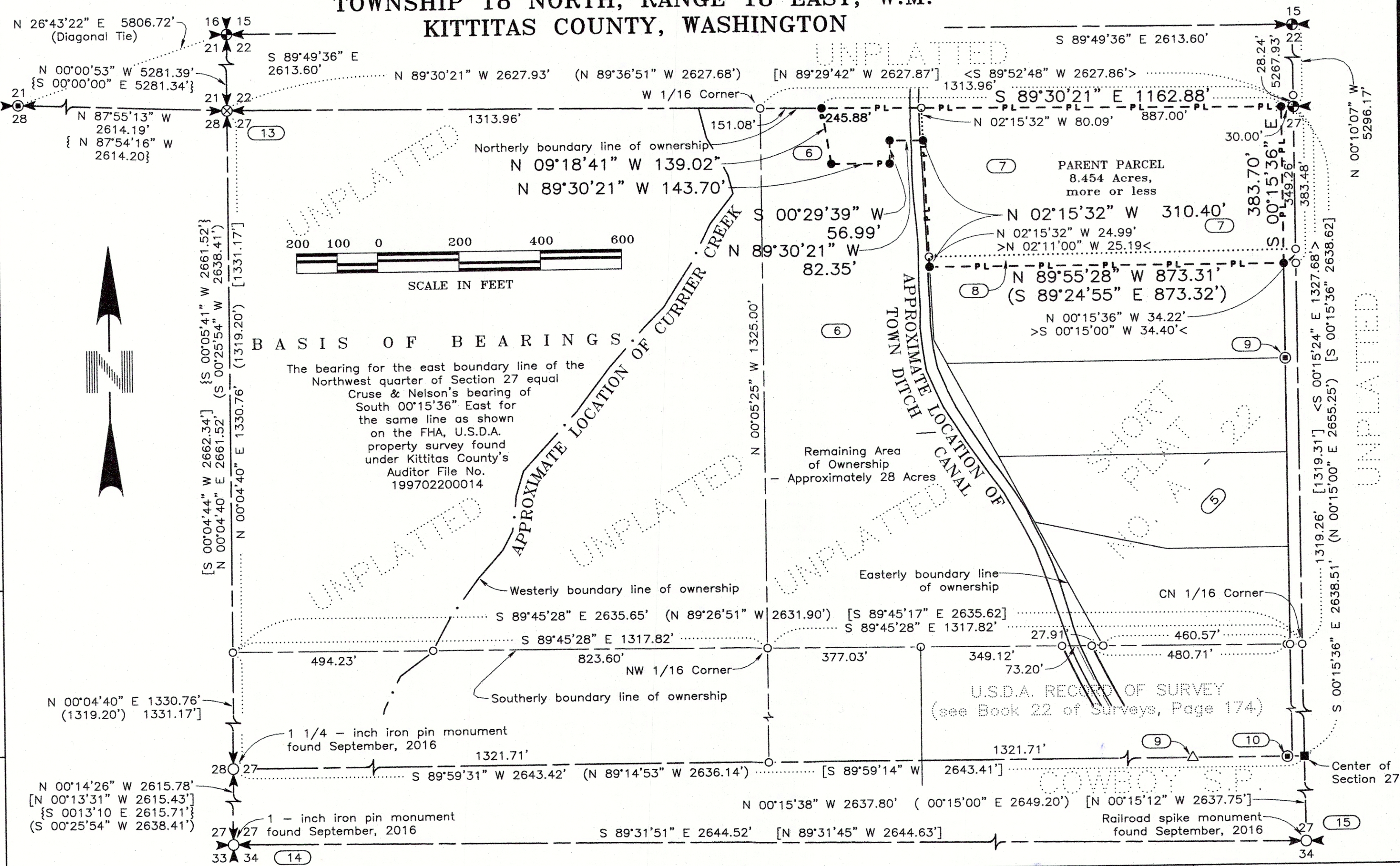


AMENDED PALOMINO FIELDS PLAT-DIVISION I

A REPLAT OF PALOMINO FIELDS PLAT-DIVISION I

A PORTION OF THE NE 1/4 OF THE NW 1/4 OF SECTION 27, TOWNSHIP 18 NORTH, RANGE 18 EAST, W.M. KITITAS COUNTY, WASHINGTON



APPROVALS

KITITAS COUNTY DEPARTMENT OF PUBLIC WORKS

I HEREBY CERTIFY that the Amended Palomino Fields Plat - Division I, has been examined by me and I approve this plat.

Dated this Day of A.D., 2018

.....
Kittitas County Engineer

HEALTH DEPARTMENT

I HEREBY CERTIFY that the Amended Palomino Fields Plat - Division I, has been examined by me and I find that the sewage and water system herein shown does meet and comply with all requirements of the County Health Department.

Dated this Day of A.D., 2018

.....
Kittitas County Health Officer

CERTIFICATE OF PLANNING DEPT.

I HEREBY CERTIFY that the Amended Palomino Fields Plat - Division I, has been examined by me and find that it conforms to the Comprehensive Plan of the Kittitas County Planning Commission.

Dated this Day of A.D., 2018

.....
Kittitas County Planning Official

CERTIFICATE OF TREASURER

I HEREBY CERTIFY that the taxes and assessments are paid for the preceding years and for this year in which the plat is now to be filed. Parcel No. 471033.

Dated this Day of A.D., 2018

.....
Kittitas County Treasurer

CERTIFICATE OF ASSESSOR

I HEREBY CERTIFY that the Amended Palomino Fields Plat - Division I, has been examined by me and I find the property to be in an acceptable condition for platting. Parcel No. 471033.

Dated this Day of A.D., 2018

.....
Kittitas County Assessor

KITITAS COUNTY BOARD OF COMMISSIONERS

EXAMINED AND APPROVED this day of A.D., 2018.

BOARD OF COUNTY COMMISSIONERS

By
Chairperson

ATTEST:

.....
Clerk of the Board

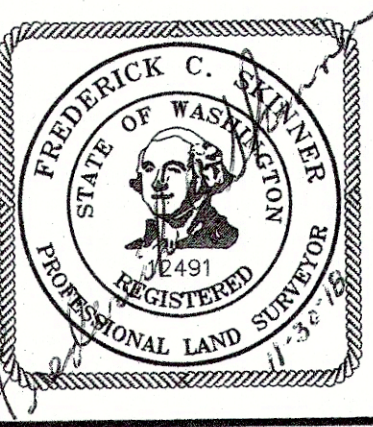
BASIS OF BEARINGS

The bearing for the east boundary line of the Northwest quarter of Section 27 equal Cruse & Nelson's bearing of South 00°15'36" East for the same line as shown on the FHA, U.S.D.A. property survey found under Kittitas County's Auditor File No. 199702200014

SURVEYOR'S CERTIFICATE

I hereby certify that the plat of Palomino Fields Plat - Division I is based on an actual survey and subdivision of Section 27, Township 18 North, Range 18 East, W.M.; that the distances and courses and angles are shown thereon correctly; that the monuments have been set; and lot and block corners staked on the ground.

Dated this day of *November 30*, A.D., 2018.



Frederick C. Skinner
Frederick C. Skinner, P.E./P.L.S.
Washington Land Surveyor No. 12491
WESTERN PACIFIC ENGINEERING AND SURVEY, INC.
Pioneer Way Professional Center
1328 Hunter Place
Moses Lake, Washington 98837

AUDITOR'S CERTIFICATE

Filed for record at the request of the Kittitas County Board of Commissioners this day of 2018, at minutes past o'clock M., and recorded in Volume of Plats, at Page (s) records of Kittitas County, Washington.

RECEIVING NO.
Kittitas County Auditor

.....
Kittitas County Auditor

By Deputy Auditor

INSTRUMENT USED Trimble R10 GPS Receivers	INDEXING DATA S27 T18N R18E
Traverse Closure Meets Standards Per WAC 332-130-090	

WESTERN PACIFIC ENGINEERING AND SURVEY, INC.
Pioneer Way Professional Center
1328 Hunter Place (509)765-1023 Moses Lake, Wash.
LCU

A Portion of the NE 1/4 of the NW 1/4 of Section 27, Township 18 North, Range 18 East, W.M.
AMENDED PALOMINO FIELDS PLAT - DIVISION I
Kittitas County Washington

Surveyed by	LMH	Date	04-16	Scale	1" = 200'
Drawn by	Tml/FCS	Date	10-18	Sheet	1 of 6
Checked by	FCS	Date	10-18	Project No.	15169

File --- Project Desc: S:\15169\15169 AMP.pro (Plotted - Nov 30, 2018) --- PROJ. NO. 15169 - AMENDED PALOMINO - DIV.

271818

UNPLATTED

UNPLATTED

UNPLATTED

UNPLATTED

SHEET NO. 2

